



September 24, 2018

Submitted To: Ouachita Council of Governments (OCOG)

From: Ouachita Parish Long-Term Recovery Steering Committee Report

Reference: Steering Committee Report

1.0 Overview:

The Ouachita Parish Long-Term Recovery Steering Committee has received positive comments from the state on the draft Resiliency Strategy.

1.1 We have received some recommendations from the Governors Office of Homeland Security and Emergency Preparedness. The recommendations have been incorporated.

1.2 We have some recommendations pending from the Office of Community Development (OCD). The recommendations are not major. Once the recommendation are reviewed and incorporated, the document will be shared with our stakeholders for any comments. Once that is complete we will present the strategy to OCOG.

RECAP

- A. Review and incorporate pending recommendations from OCD
- B. Share the strategy document with the stakeholders.
- C. Provide Strategy to OCOG.

2.0 Strategy Overview

See attached Resiliency Strategy Overview

Exhibit A
Steering Committee Members

Ouachita Parish Long-Term Recovery Steering Committee Members
May 29, 2018

Ouachita Parish Police Jury:

Karen Cupit
Kevin Crosby

Monroe City:

Kim Golden
Jimmie Bryant

West Monroe City:

Courtney Hornsby
Robbie George

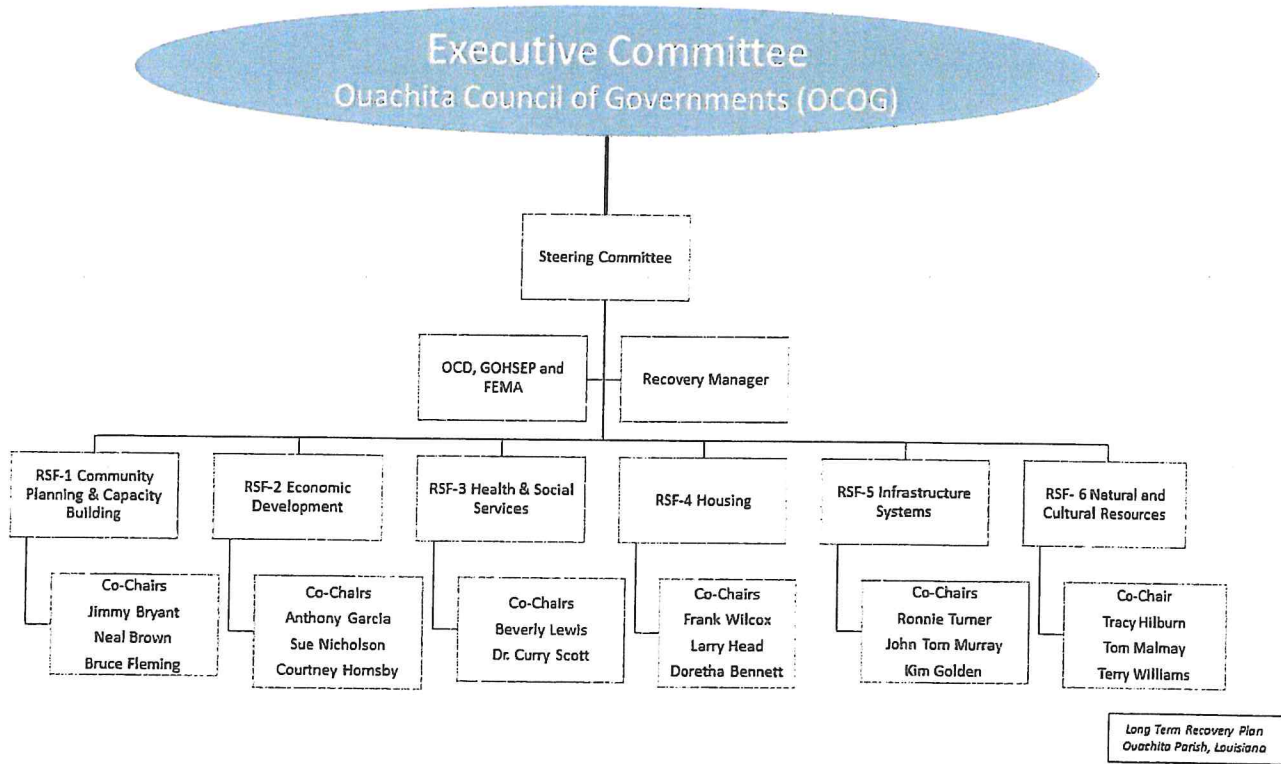
Ouachita Parish Office of Homeland Security and Emergency Preparedness
Neal Brown

North Delta Regional Planning

David Creed (Doug Mitchell attends for continuity)

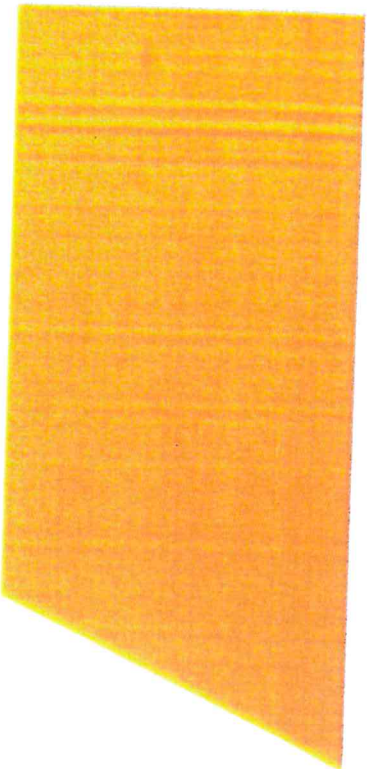
Tom Malmay, Recovery Manager and Tracy Hilburn, Tensas Basin Levee District attend the Steering Committee Meetings. They are not members.

Exhibit B
Organizational Chart



Prepared by: Tom Malmay

Approved by the Steering Committee at meeting on _____



OUACHITA STRONG RESILIENCY STRATEGY

OUACHITA PARISH · MONROE
RICHWOOD · STERLINGTON · WEST MONROE

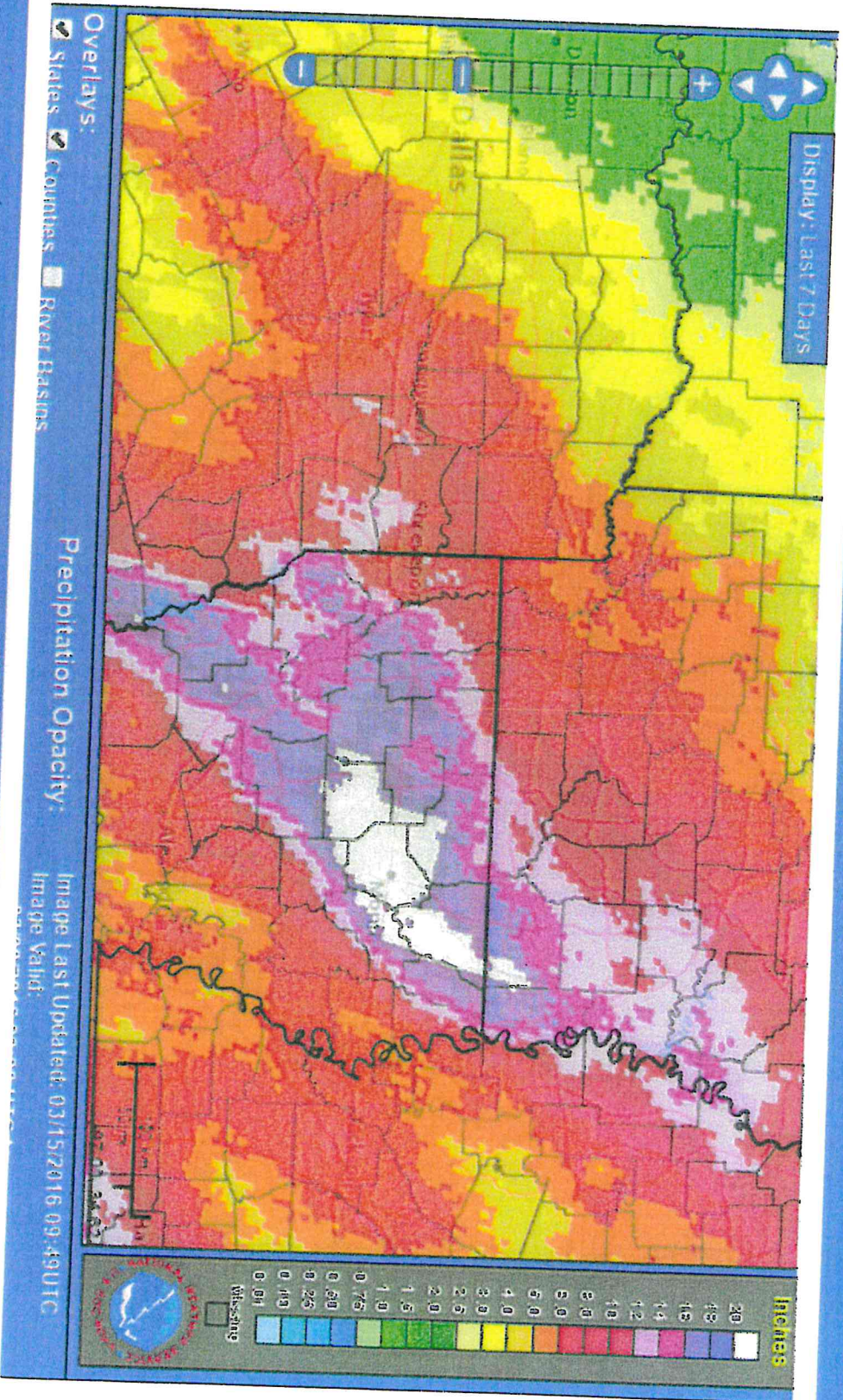
Ouachita Parish Resiliency Strategy

September 25, 2018



“Quachita Strong – A strategy for local, state and federal governments, agencies, businesses, faith based and non-profit sectors to work together to rebuild our community stronger and smarter”

March 2016 Flood

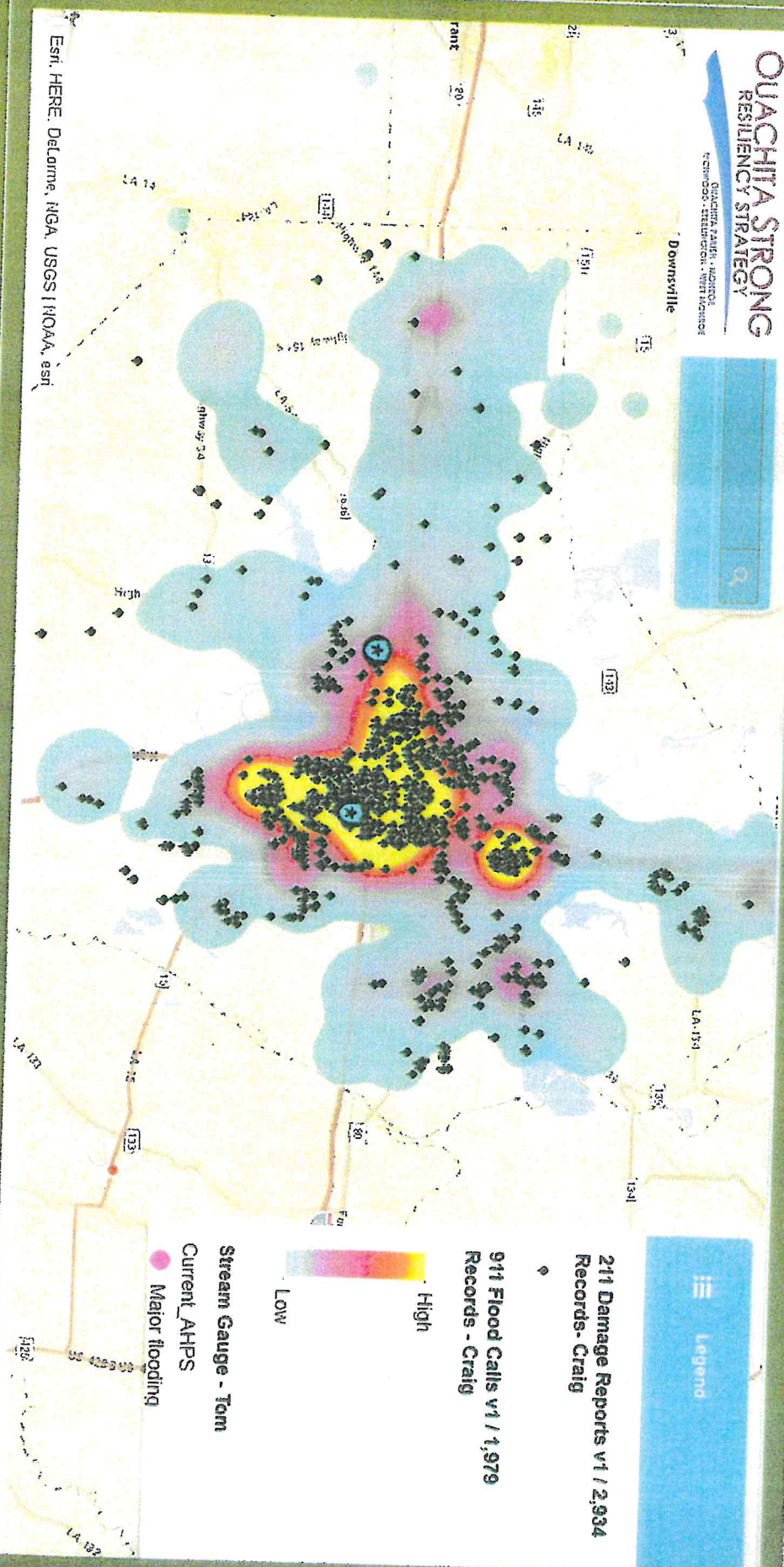


911 Flood Calls

OUACHITA STRONG RESILIENCY STRATEGY

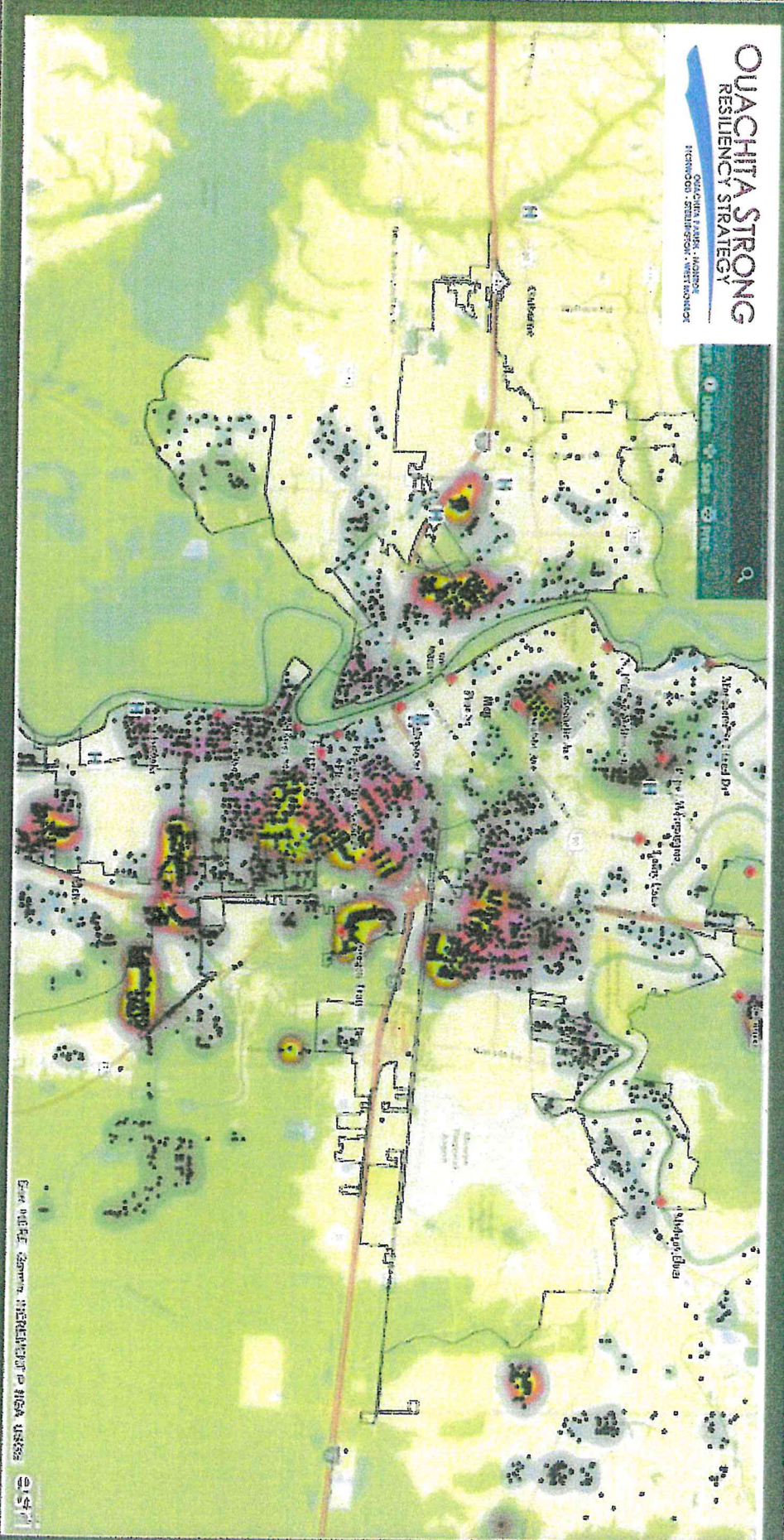
OUACHITA PARISH - MONROE
NEW ORLEANS - ST. LOUIS

Downsville

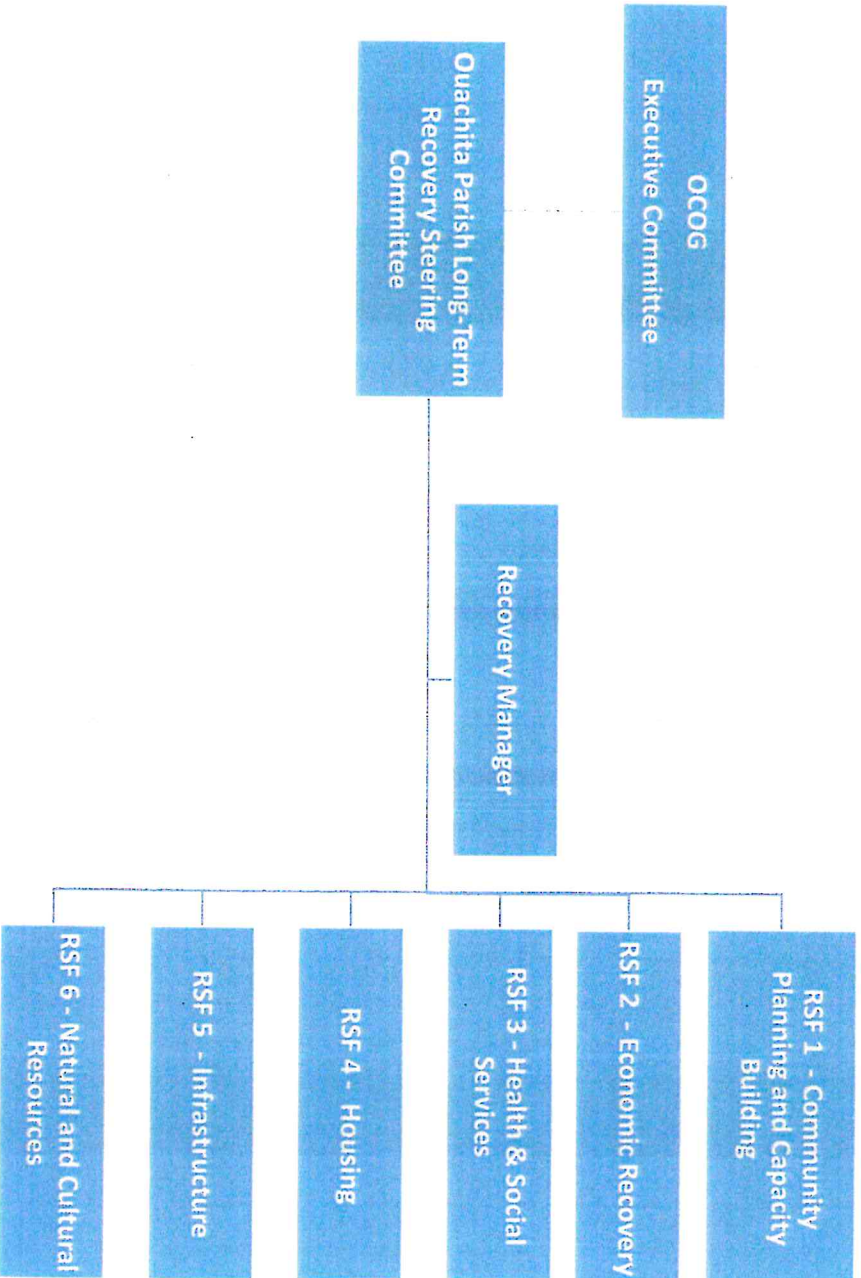


Enr. HERE, DeLorme, NGA, USGS, INROAD, Esri

March 2016 Flood Impact



Organizational Chart



WHY RESILIENCY

Within days after what is now known as the “Great Flood of 2016,” Ouachita Parish leaders knew a different approach to the recovery was needed than in the past.

Local officials partnered with the Federal Emergency Management Agency (FEMA), Office of Community Development (OCD) and Governor’s Office of Homeland Security and Emergency Preparedness (GOHSEP) and adopted the National Disaster Recovery Framework (NDRF) to manage recovery efforts. In the Fall of 2017 local leaders set a goal to become more resilient.

Resilience is the capacity of a community to sustain, bounce back and prosper no matter what type of challenge they experience.



GUIDING PRINCIPLES

Unwavering principles were needed to guide Ouachita Strong through all circumstances, irrespective of changes in its goals and strategies.

MISSION

Increase the resiliency and emergency preparedness of Ouachita Parish and the cities and towns therein through smarter and stronger rebuilding of the whole community following declared events.

VISION

A stronger and more resilient Ouachita Parish with collaborative networks through civic and community engagement to connect and leverage resources with transparency, accountability and inclusiveness when preparing for, responding to, rebuilding from and mitigating the impact of declared events.

PURPOSE

To facilitate accessing and leveraging resources for the rebuilding of the whole community in a way that builds upon the community's vision for its recovery and rebuilding with transparency, accountability and inclusiveness.

Quachita Council of Government Actions

- The Ouachita Council of Governments (OCCOG) responded together during the March 2016 Flood.
- The OCCOG work together on the recovery and Long-term Recovery.
- In January 2017 OCCOG directed the engineers to develop plans to reduce flood risk with participation in the Hazard Mitigation Grant Program.

It is generally accepted that the directive from OCCOG to the engineers to jointly develop the flood risk reduction strategy was pivotal in the formation of what is now Ouachita Strong.

- On August 25, 2017 OCCOG passed a resolution establishing the Long-Term Recovery Committee and Steering Committee.
- On April 24, 2018 OCCOG passed a resolution adopting the By-Laws.
- Four Public Meetings were promoted and held to receive input from the public.

Resiliency Planning Process



- In April 2018 FEMA deployed to Monroe, LA to assist with developing a Ouachita Parish Resiliency Strategy.
- We embraced the Six Recovery Support Functions as our framework, set goals and objectives and established subcommittees.
- The subcommittees held meeting with stakeholders and worked on initiatives to reduce risk and make our community more resilient.
- Four Public Meetings were held to receive input from the public.



ATTENTION
RESIDENTS OF OUACHITA PARISH

OUACHITA STRONG
RESILIENCY STRATEGY

COMMUNITY ENGAGEMENT INITIATIVE

THANK YOU for the public input given at our
JUNE PUBLIC MEETINGS.

Please spread the word and attend one of the public meetings shown below. Officials will share information gathered from the public, overview some actions and projects that have been identified, and update residents about hazard mitigation funding for projects that will help make our entire parish *Ouachita Strong!*

PLEASE JOIN US

JULY COMMUNITY MEETINGS

Wed, July 18th, 6:00pm - 8:00pm	801 S. 46th, Thursday, July 19, 6:00pm
Home at the Center	Home at the Center
377 Louisiana (corner of 46th)	377 Louisiana (corner of 46th)
Monroe, LA	Monroe, LA

This is a Come, Share, and Go type of Meeting.



Strength in Partnerships -- ENAGE



The resiliency planning process has yielded new partners in all Recovery Support Functions and revitalized existing ones.

- Federal Emergency Management Agency (FEMA)
 - Governor's Office of Homeland Security and Emergency Preparedness (GOHSEP)
 - Office of Community Development (OCD)
 - Housing and Urban Development (HUD)
 - Sterlington Citizens Advisory Panel (CAP)
 - National Oceanic and Atmospheric Administration (NOAA)
 - Center for Disease Control (CDC)
 - United States Geological Surveying (USGS)
 - Don Wheeler, Meteorologist
 - Cheniere Lakeview Community Coalition
 - Environmental Protection Agency (EPA)
 - National Weather Service (NWS)
 - North Delta Community College
 - City of Monroe
 - City of West Monroe
-
- Ouachita Parish Police Jury
 - Town of Sterlington
 - Town of Richwood
 - Ouachita Parish Office of Homeland Security and Emergency Preparedness
 - Environmental System Research Institute (ESRI)
 - Downtown Monroe Alliance
 - Chambers of Commerce: West Monroe-West Ouachita and Monroe / Monroe Chamber of Commerce
 - Tensas Basin Levee District
 - University of Louisiana at Monroe (ULM)
 - Grambling State University (GSU)
 - North Delta Regional Planning
 - Concerned Clergy of Monroe
 - Engineering firms: Denmon Engineering Co. Lazenby & Associates, Inc. S. E. Huey Co.
 - Louisiana Helicam, Mark Townsend
 - Angus Chemical Co.

A “Deeper” look at the Ouachita River: Ecosystem Benefits and Approaches to River Maintenance

Project Title: A “Deeper” look at the Ouachita River: Ecosystem benefits and approaches to river maintenance for sustainability and resiliency from flood disaster impacts

Project objective: Apply Structure Decision Making (SDM) approach to holistically characterize community sustainability goals and employ ecosystem goods and services assessment methods and tools to compare the benefits under various alternative decision pathways relates to how our community prepares for future extreme events.

The outcome of this project will be concrete guidance on the impact and sustainability of proposed flood control strategies on the river ecosystem services most important to the citizens of Monroe and West Monroe, LA.

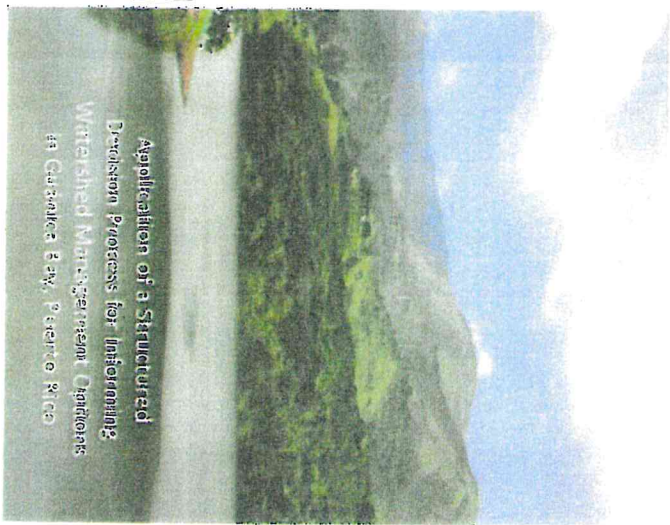
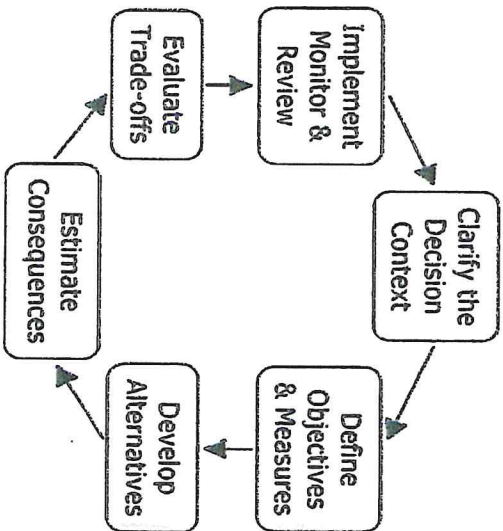
Ouachita Parish (Silver Water)



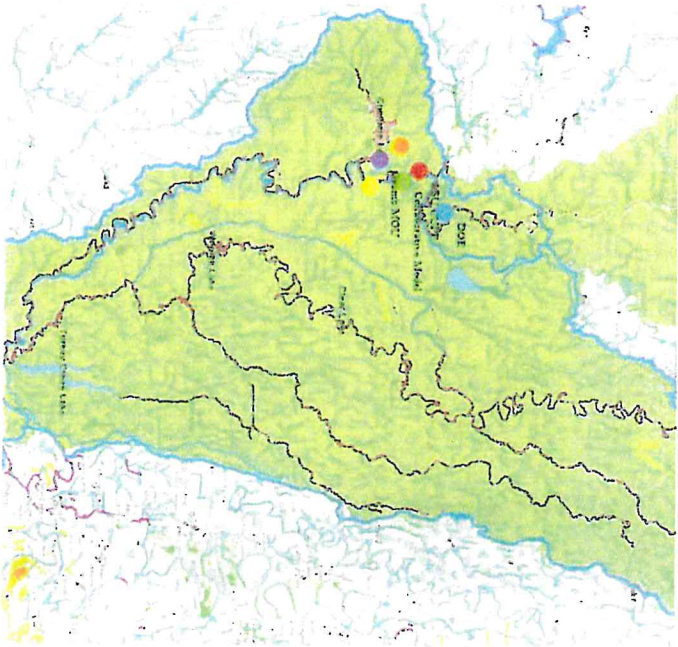
EPA Regional Sustainability Environmental Sciences Research Program (RESES)



A process to elicit and organize key stakeholder values and relevant scientific knowledge for making decisions



Application of a Structured Decision Process for Improving Watershed Management Conditions in Garrettsville, Ohio



- Orange: RESES Project Workshop #1
- Blue: DOE Project
- Purple: Grambling State University partner
- Yellow: Tensas Basin Levee District location
- Red: EPA LSU CUPP Partnership
- Green: Collaborative Model

THE BUSINESS CASE FOR RESILIENCY

Analysis

- 2014 Louisiana Hazard Mitigation Plan – High Flood Risk Ouachita Parish.
- 2016 Ouachita Parish Hazard Mitigation Plan – High Flood Risk Ouachita Parish.
- 2016 NOAA Report on potential increase in frequency of intense rainfall events.
- 2016 Over \$132 Million Dollars in damages was documented in the 2016 Flood.

Vulnerable Population (lacking in resources needed to recovery)

- 2016 FEMA Social Vulnerability Index (SOVI) – 40% of Ouachita Population in Medium to High Categories.
- 2014 Center for Disease Control Social Vulnerability Index (SOVI) - Categorized a large part of Ouachita Parish as “High Risk”

March 2016 Flood

Jurisdictions	Individual Assistance (IA) Paid	National Flood Insurance (NFIP) Paid	Public Assistance	Total Paid
Ouachita Parish	\$14,525,416.85	\$33,618,900.48	\$3,980,745.65	\$52,125,062.98
Monroe	\$10,577,381.46	\$44,511,576.26	\$4,839,602.65	\$59,928,560.37
West Monroe	\$3,067,887.50	\$9,223,618.87	\$1,029,905.64	\$13,321,412.01
Richwood	\$548,286.80	\$548,655.05	\$0.00	\$1,096,941.85
Stirlington	\$48,166.06	\$46,419.67	\$0.00	\$94,585.73
Other Entities	N/A	N/A	\$5,472,427.54	\$5,472,427.54
Total	\$28,767,138.67	\$87,949,170.33	\$15,322,681.48	\$132,038,990.48

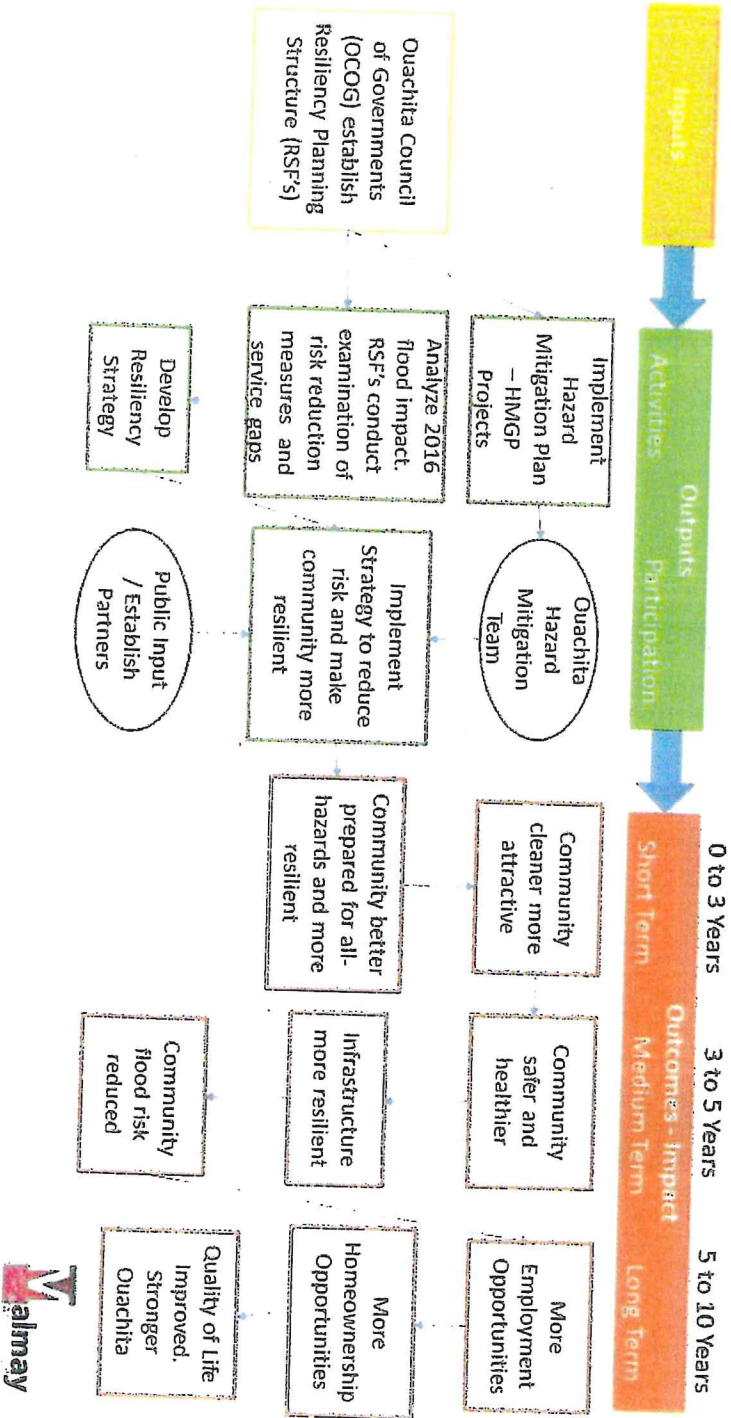
NFIP Claims 1978 to 2017 Top Ten Years

Year	Paid	Count	Percent of Total Dollars
2016	\$ 87,949,170.33	1,559.00	57.3%
1991	\$ 19,869,017.19	1,155.00	13.0%
2011	\$ 13,420,685.75	508.00	8.8%
1989	\$ 9,384,030.00	759.00	6.1%
2008	\$ 8,241,203.69	333.00	5.4%
1978	\$ 4,740,352.90	349.00	3.1%
1982	\$ 3,625,239.06	327.00	2.4%
2009	\$ 1,795,288.75	87.00	1.2%
1983	\$ 661,486.09	109.00	0.4%
2014	\$ 608,763.66	17.00	0.4%
Other Events	\$ 3,081,642.39	408.00	2.0%
Total	\$ 153,376,879.81	5,611.00	

HOW DO WE BECOME RESILIENT?

- The Ouachita Parish Resiliency Strategy establishes a process to design, manage and leverage initiatives and projects that reduce our risk to all-hazards. The process will address the identified community priorities and be a sustained action monitored by the Ouachita Parish Long-Term Recovery Steering Committee.

Logic Model: Ouachita Resiliency Project



STRATEGY AND RETURN ON INVESTMENT

- Action 1: Risk Reduction** - Disaster impacts from all-hazards will be reduced through structural and non-structural hazard mitigation measures. This includes policy, planning and preparedness, which will, in turn, reduce risk.
Return on Investment (ROI) – Fewer homes flood, increased economic sustainability and safer community.
- Action 2: Community Priorities** - Community priorities have been identified. They include economic investments in workforce development, job creation, education, supporting economic infrastructure, housing, neighborhood revitalization, mental health and crime prevention. As a result, families will become stronger.
Return on Investment (ROI) – Stronger economic conditions, people are safer, income levels and home values rise, and recreational opportunities increase quality of life.
- Action 3: Preparedness** - The RSF's will include community preparedness in their efforts. Families will be prepared for future emergencies.
Return on Investment (ROI) – Loss of life and injury will be reduced. Government and volunteer agencies will respond more quickly, affording a more effective recovery.

RSF PROJECT DEVELOPMENT

RSF's will develop projects based on their goals, objectives and initiatives.

The RSF's will develop an internal project selection process.

The RSF Co-Chairs will forward selected projects to the Steering Committee for approval.

PROJECT APPROVAL PROCESS

- Project approval does not mean funded. It means the projects fits the resiliency Strategy and the project is now a part of the Ouachita Parish Resiliency Strategy. A letter of support will be provided. The Steering Committee will assist RSF's with identifying funding sources.
- The projects are added to the plan upon approval.



NEXT STEPS

- Adoption and Approval of the Ouachita Parish Resiliency Strategy
- The Steering Committee will meet within 14 Days of approval to provide RSF's project development instructions.
- Steering Committee will receive three projects from each RSF by between December 15, 2018 and February 1, 2019.
- Update the Ouachita Parish Resiliency Strategy between February 1 - 28, 2019

