

Appendix A

Public Visioning Results

Exercise 3: Ranking and Scoring Criteria

Figure A - 1: January 27, 2015 Workshop Table 1 Criteria Ranking Results

Table 1 1/27/15 5:30-7:00 Duchita Sr. Center

CRITERIA	RANKING DOTS	COUNT
Improve Safety		14
Improve Security		3
Protect Environment		5
Reduce Congestion		17
Promote Efficiency		14
Support Economic Goals		10
Support Land Use Goals		4
Increase Connections		10
Improve Access		8
Connect Modes of Travel		6
Conserve Energy		6
Improve Quality of Life		9
Increase Multi-modal Options		5
Preserve Right-of-Ways		9

Figure A - 2: January 27, 2015 Workshop Table 2 Criteria Ranking Results

Table 2

CRITERIA	RANKING DOTS	COUNT
Improve Safety		22
Improve Security		4
Protect Environment		3
Reduce Congestion		16
Promote Efficiency		11
Support Economic Goals		8
Support Land Use Goals		2
Increase Connections		5
Improve Access		8
Connect Modes of Travel		3
Conserve Energy		2
Improve Quality of Life		10
Increase Multi-modal Options		0
Preserve Right-of-Ways		2

Figure A - 3: January 27, 2015 Workshop Table 3 Criteria Ranking Results

Table 3

CRITERIA	RANKING DOTS	COUNT
Improve Safety		11
Improve Security		0
Protect Environment		1
Reduce Congestion		13
Promote Efficiency		17
Support Economic Goals		4
Support Land Use Goals		1
Increase Connections		15
Improve Access		9
Connect Modes of Travel		0
Conserve Energy		1
Improve Quality of Life		13
Increase Multi-modal Options		0
Preserve Right-of-Ways		11

Figure A - 4: January 29, 2015 Workshop Table I Criteria Ranking Results

1-29-15 Monroe Civic Center 5:30-7pm Table I

CRITERIA	RANKING DOTS	COUNT
Improve Safety		15
Improve Security		11
Protect Environment		10
Reduce Congestion		16
Promote Efficiency		21
Support Economic Goals		30
Support Land Use Goals		10
Increase Connections		19
Improve Access		18
Connect Modes of Travel		14
Conserve Energy		17
Improve Quality of Life		22
Increase Multi-modal Options		15
Preserve Right-of-Ways		22

Table A - I: Summary of Group Scoring of Criteria

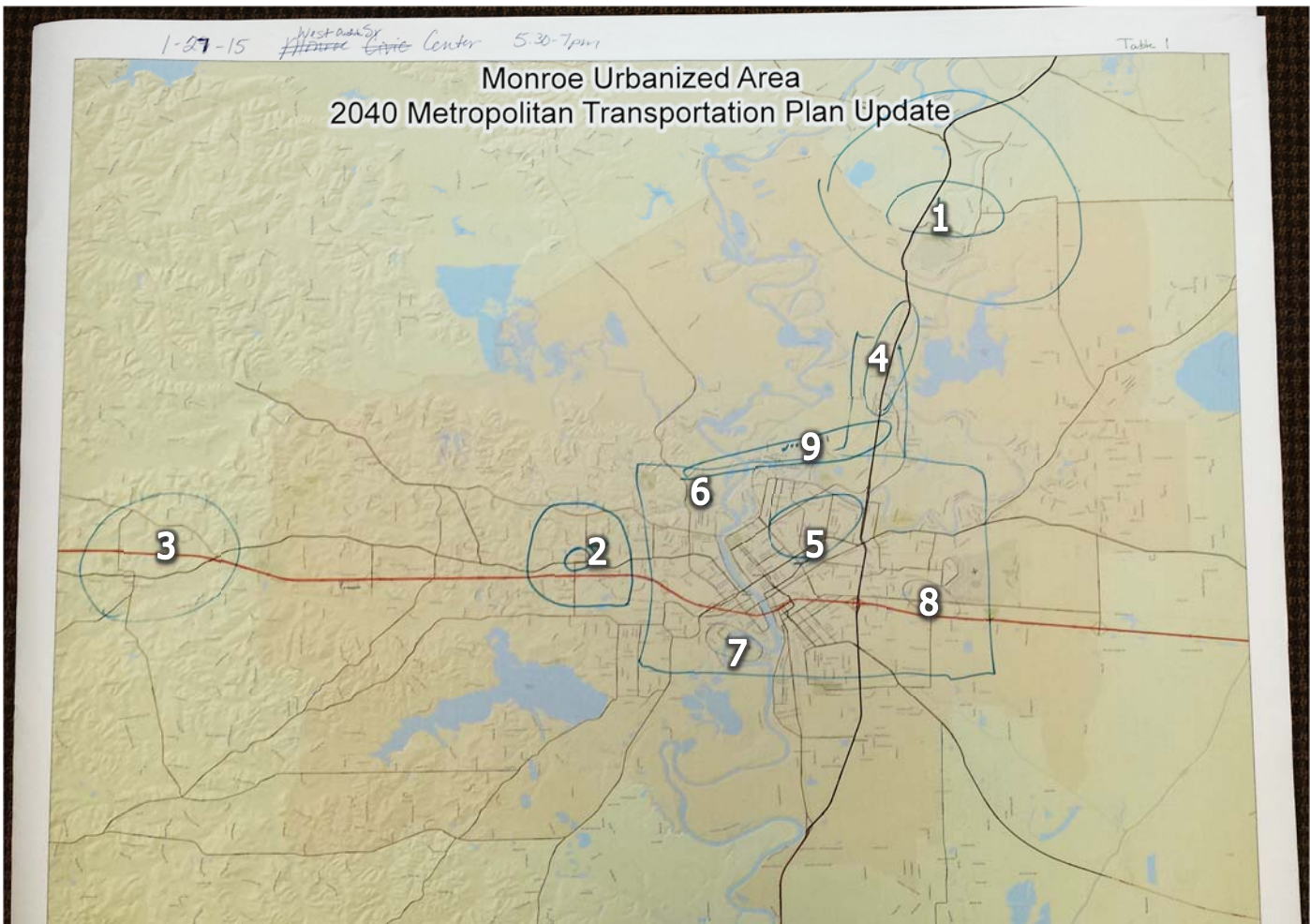
Criteria	Total Number of Dots	Rank
Promote Efficiency	63	1
Reduce Congestion	62	2 (tie)
Improve Safety	62	2 (tie)
Improve Quality of Life	54	4
Support Economic Goals	52	5
Increase Connections	49	6
Preserve Rights-of-way	44	7
Improve Access	43	8
Conserve Energy	26	9
Connect Modes of Travel	23	10
Increase Multi-modal Options	20	11
Protect Environment	19	12
Improve Security	18	13
Support Land Use Goals	17	14

Table A - 2: Summary of Individual Scoring of Criteria

Criteria	Score				
	Extremely Important (5)	Very Important (4)	Important (3)	Not Very Important (2)	Unimportant (1)
Improve Safety	14	5	2	-	-
Improve Security	6	2	6	6	1
Protect Environment	3	3	8	6	1
Reduce Congestion	12	7	2	-	-
Promote Efficiency	11	5	3	2	-
Support Economic Development	12	5	2	2	-
Support Land Use Goals	4	7	6	2	2
Increase Connections	10	3	7	1	-
Improve Access	9	9	3	-	-
Connect Modes of Travel	5	7	2	3	4
Conserve Energy	3	6	6	3	3
Improve Quality of Life	11	5	5	-	-
Increase Multi-modal Options	4	8	3	3	3
Preserve Right-of-Ways	9	7	3	1	1

Exercises 4 & 5: Growth Trends and Envisioning the Future Transportation System

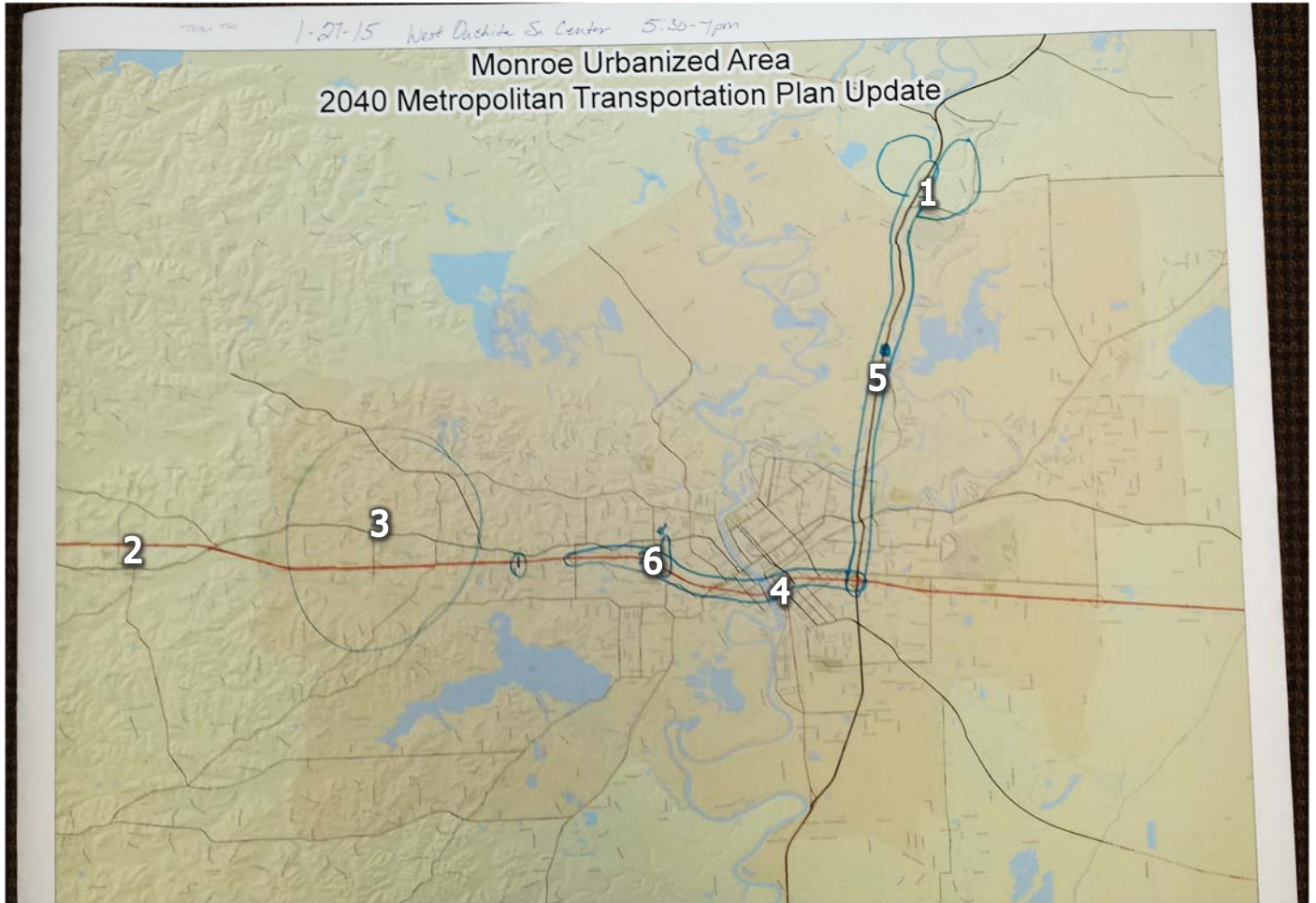
Figure A - 5: January 27, 2015 Workshop Table I Map and Comments



The numbers marked on the map correspond to the numbers shown below.

1. Northeast Ouachita driven by schools, lakes, work, availability of land, the whole area not just Sterlington
2. Claiborne School District area
3. Calhoun area
4. 165N corridor
5. Tower Drive area
6. Alternative transportation systems will need to be employed
7. Roadway to support port growth and expansion
8. Airport Rd connection – Kansas Ln - money needs to be invested there
9. Creation of a North Loop with 4th bridge – note the bridge at Sterlington is technically the 4th bridge, so they are really referring to a 5th bridge

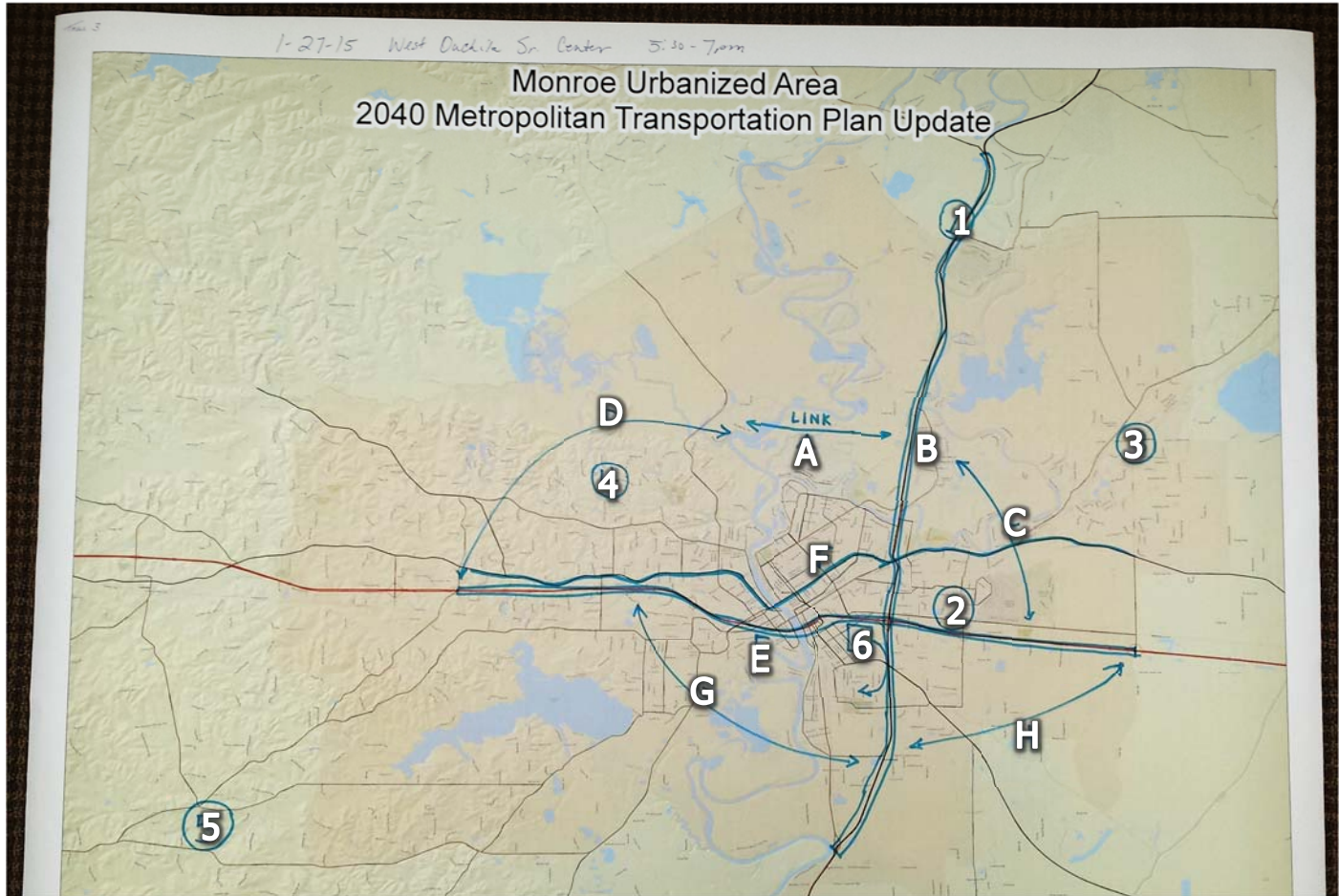
Figure A - 6: January 27, 2015 Workshop Table 2 Map and Comments



The numbers marked on the map correspond to the numbers shown below.

1. 165 North of Frenchman's Bend Drive by new school
2. Calhoun - West Ouachita area around Camp Road growing with development and new homes are being built.
3. Interchange at Vancil
4. Wells Road to 165 North - Takes 30 minutes to get there due to heavy traffic
5. 165 from I-20 to Sterlington -The road needs to be wider
6. Thomas Road- North of I-20

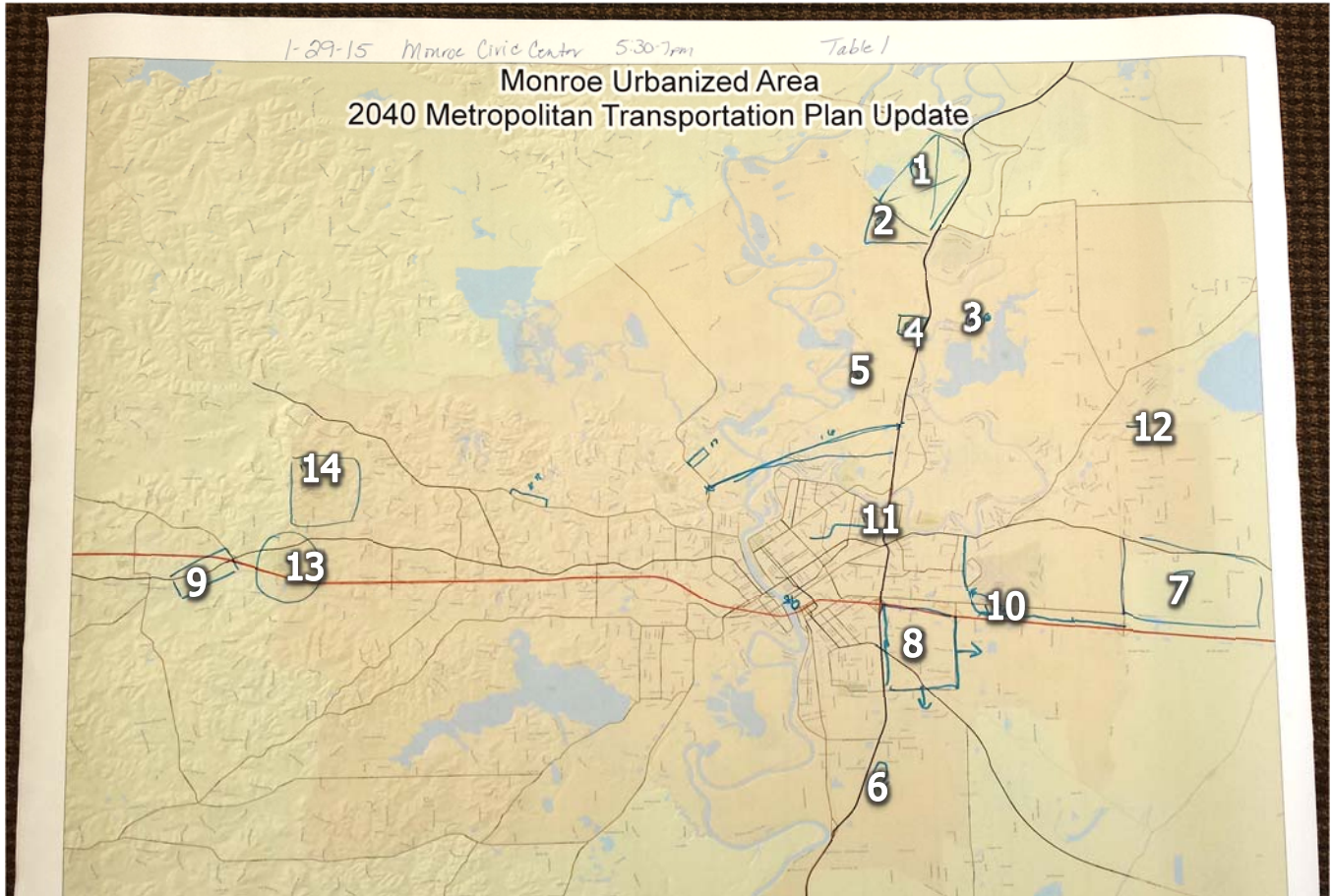
Figure A - 7: January 27, 2015 Workshop Table 3 Map and Comments



The numbers/letters marked on the map correspond to the numbers shown below.

1. Sterlington area
2. US 80 and Well Rd area
3. Thomas Rd area
4. Northwest Ouachita Parish
5. Southwest Ouachita also because it has good schools and ample room for development.
6. Traffic with decline in the city of Monroe because of crime, congestion, security and schools which are perceived to be bad schools.
- A. A fourth bridge linking North Monroe & North West Monroe
- B. US 165 from Sterlington to Caldwell Parish
- C. The Kansas Connector
- D. Link from the 4th bridge back to I-20
- E. Improvement of Interstate capacity
- F. Improvement of safety and capacity
- G. A South Loop (West)
- H. A South Loop (East)

Figure A - 8: January 29, 2015 Workshop Table I Map and Comments



The numbers marked on the map correspond to the numbers shown below.

1. North of Keystone, west of US 165
2. South of Keystone, west of US 165
3. East of US 165 near CenturyLink
4. CenturyLink Crossover west of US 165
5. Smaller growth area
6. Charleston Plantation – industrial & commercial growth
7. Milhaven Plantation – industrial & commercial growth
8. Garret, Winnsboro Rd, south side economic development
9. Calhoun research station
10. I-20 border from Nutland Rd to Milhaven – corridor goes inside Garret Rd – 540
11. Infill at Tower Armand with multi-family & industrial growth
12. Swartz area building school and will fill in with residential growth
13. Golf course could become a residential area
14. Golf course should builds out – high end residential

[This page intentionally left blank]